

## Abdominal and neuroimaging quiz case



**Author:**  
Shalendra Misser<sup>1</sup>

**Affiliation:**  
<sup>1</sup>Lake Smit and Partners Inc,  
Durban, South Africa

**Corresponding author:**  
Shalendra Misser,  
shalendra.misser@lakesmit.  
co.za

**Dates:**  
Received: 06 May 2016  
Accepted: 12 May 2016  
Published: 22 June 2016

**How to cite this article:**  
Misser S. Abdominal and  
neuroimaging quiz case. S Afr  
J Rad. 2016;20(1), a957.  
[http://dx.doi.org/10.4102/  
sajr.v20i1.1029](http://dx.doi.org/10.4102/sajr.v20i1.1029)

**Copyright:**  
© 2016. The Authors.  
Licensee: AOSIS. This work  
is licensed under the  
Creative Commons  
Attribution License.

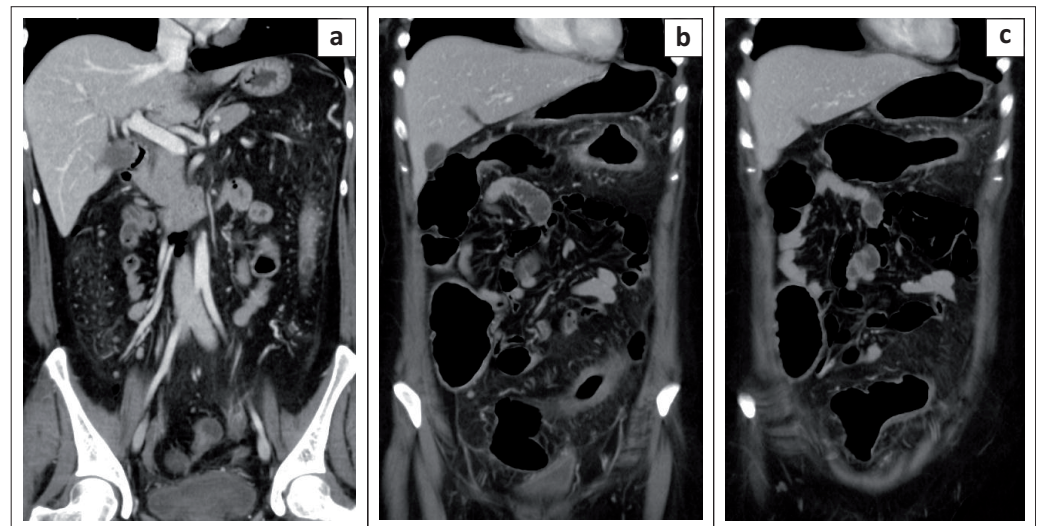
A 40-year-old lady had a CT and an MRI scan of her brain for investigation of severe headache following recent recurrent bowel surgery. The post-operative course was complicated by abdominal wall haematoma, and she required multiple blood transfusions. The background history of multiple previous bowel resections and chronic anti-inflammatory therapy for inflammatory bowel disease was noted.

Describe the relevant imaging findings and formulate the most appropriate clinical diagnosis.

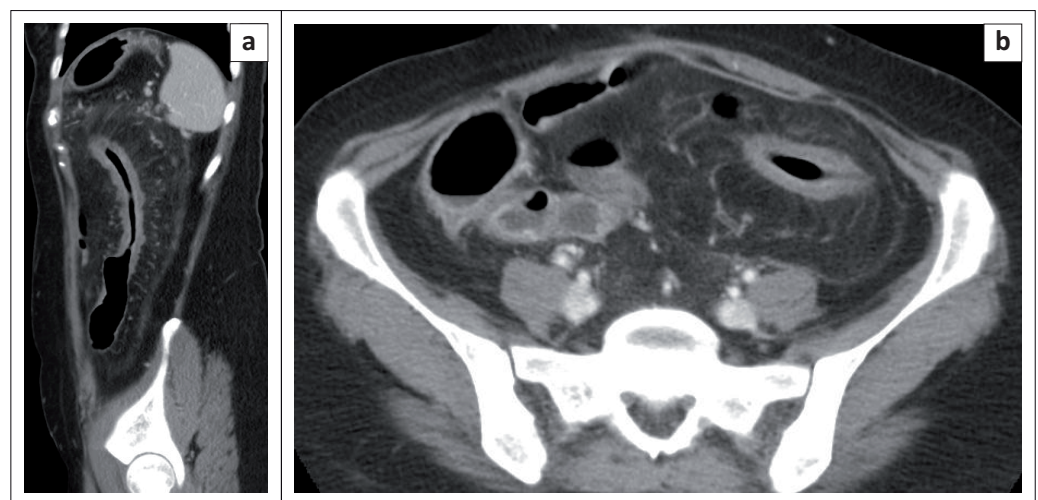
Please submit your response to [shalendra.misser@lakesmit.co.za](mailto:shalendra.misser@lakesmit.co.za) not later than 31 July 2016.

The winning respondent will receive R2000 as a reward from the RSSA.

A detailed diagnosis and discussion will be presented in the next issue of the SAJR.



**FIGURE 1:** Coronal reformat images (a, b and c) of the abdomen in venous phase after intravenous contrast administration.



**FIGURE 2:** Sagittal (a) and (b) axial images of the abdomen in venous phase after intravenous contrast administration.

**Read online:**



Scan this QR  
code with your  
smart phone or  
mobile device  
to read online.

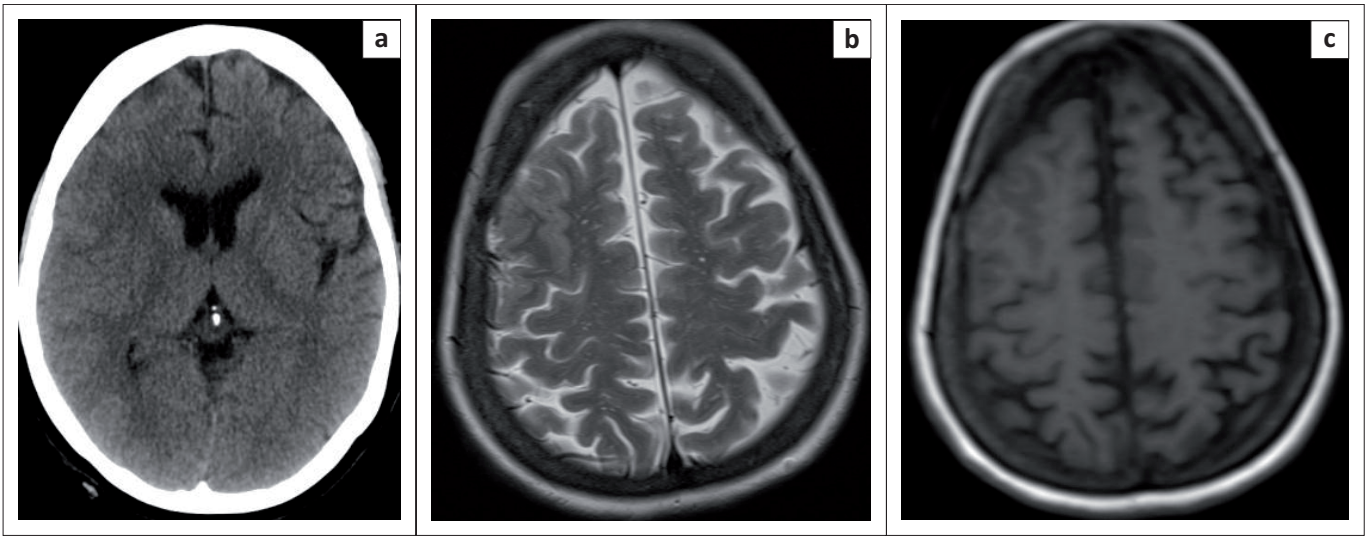


FIGURE 3: Axial non-contrasted (a) CT image, (b) T2 and (c) axial T1-weighted MRI images.

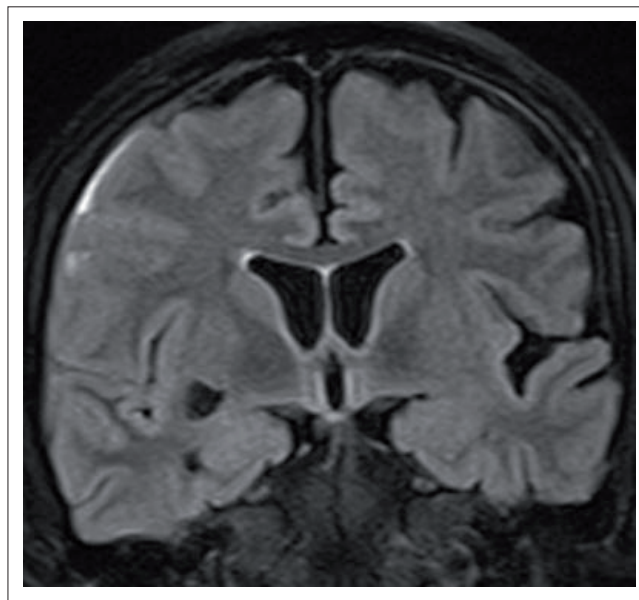


FIGURE 4: Coronal flair MRI image.

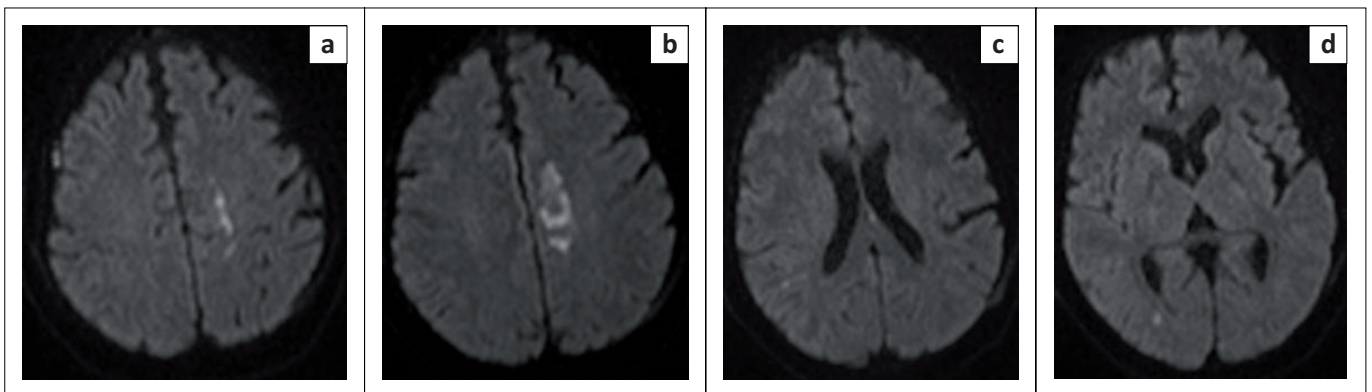


FIGURE 5: Axial diffusion-weighted b1000 MR images (a, b, c and d).

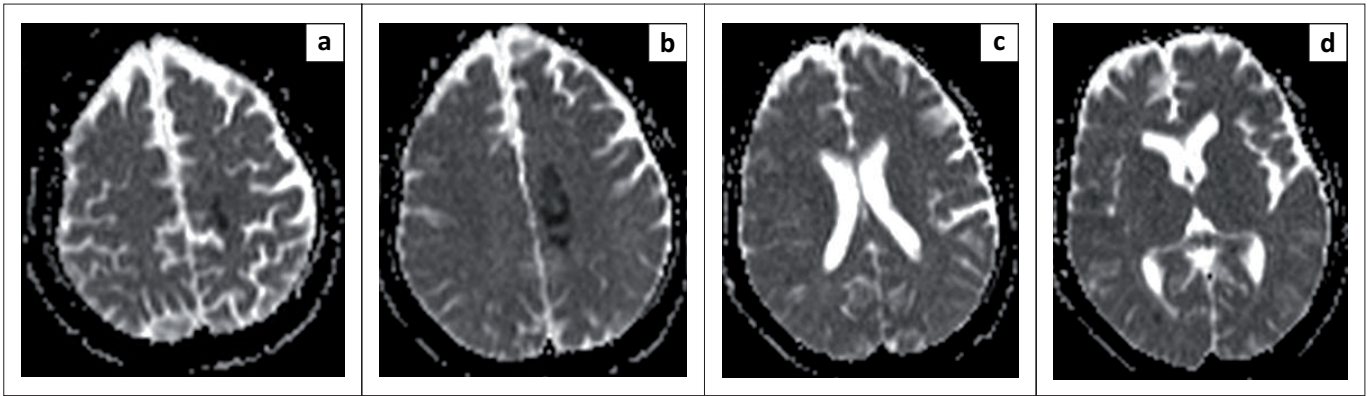


FIGURE 6: Corresponding axial ADC-mapped MR images (a, b, c and d).

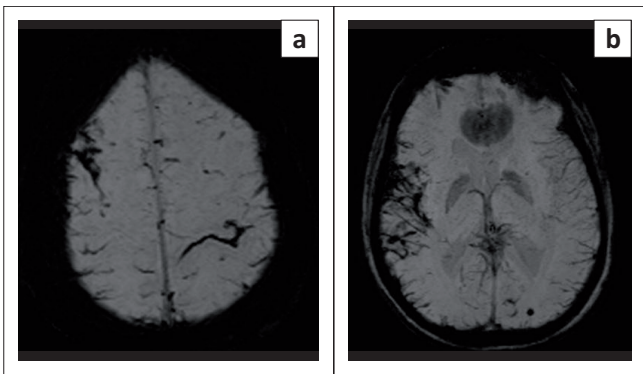


FIGURE 7: Axial SWI MR images (a and b).

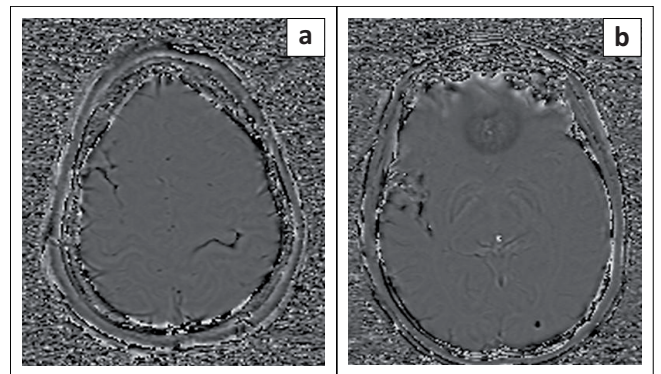


FIGURE 8: Corresponding axial PHASE MR images (a and b).